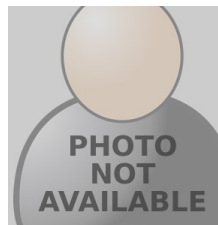
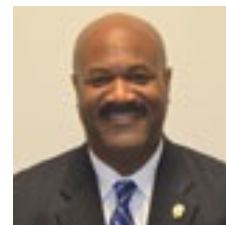


Wednesday, February 12th 2014
12:00–2:00pm
Wheatley Hall, 1st Floor, Room 0075A

**Light refreshments will be served.*



Julie Yun
Director, Campus
Counseling Center



James Overton
Interim Vice
Chancellor for
Student Affairs



Stephanie Hartwell
Sociology

spring 2014 forum series

Center for Innovative Teaching



Coping with Students in Turmoil in the Classroom Setting and Beyond

As a faculty member what is your role if you encounter a student that you feel is distressed or distressing to others?

Please join your colleagues to discuss this issue and the resources available to you and your students. Panelists Stephanie Hartwell, professor of Sociology and Senior Associate Dean of Graduate Studies and Graduate Admissions, James Overton, Interim Vice Chancellor for Student Affairs, and Julie Yun, Director of the Campus Counseling Center will present steps to take if this situation occurs and how to assess the level of distress as well as provide you and your students with helpful resources.

For questions or assistance, please contact: faculty.development@umb.edu